



## KENTUCKY

### SUMMARY

- Kentucky is in the red zone for cases, indicating 101 or more new cases per 100,000 population last week, with the 21st highest rate in the country. Kentucky is in the orange zone for test positivity, indicating a rate between 8.0% and 10.0%, with the 18th highest rate in the country.
- Kentucky has seen an increase in new cases and a decrease in test positivity over the last week.
- The following three counties had the highest number of new cases over the last 3 weeks: 1. Jefferson County, 2. Fayette County, and 3. Warren County. These counties represent 37.1% of new cases in Kentucky.
- 78% of all counties in Kentucky have moderate or high levels of community transmission (yellow, orange, or red zones), with 39% having high levels of community transmission (red zone).
- During the week of Oct 12 - Oct 18, 21% of nursing homes had at least one new resident COVID-19 case, 41% had at least one new staff COVID-19 case, and 4% had at least one new resident COVID-19 death.
- Kentucky had 185 new cases per 100,000 population in the last week, compared to a national average of 133 per 100,000.
- Current staff deployed from the federal government as assets to support the state response are: 1 to support operations activities from FEMA and 15 to support medical activities from VA.
- Between Oct 17 - Oct 23, on average, 181 patients with confirmed COVID-19 and 98 patients with suspected COVID-19 were reported as newly admitted each day to hospitals in Kentucky. An average of greater than 95% of hospitals reported either new confirmed or new suspected COVID patients each day during this period.

### RECOMMENDATIONS

- This week, we have included PPE availability reported from your hospitals. We will continue to work together on improving the quality of reporting on hospital admissions and supplies.
- Need a different strategy for reducing transmission; what worked in the summer is not working in the fall with cooler weather and considering COVID fatigue. Keep mask requirements in place and ensure physical distancing, hand hygiene, avoiding crowds in public and social gatherings in private, and flu immunizations.
- Try a “rapid test and isolate” campaign in two counties to create county competition to decrease transmission and cases. Incentivize county residents to come forward to get tested to significantly reduce viral spread and cases within a few weeks. This will be a community approach with every resident doing their part to stop the spread. Have resources set up to support positive individuals who may not be able to isolate within their household. Make the challenge time-limited and focused.
- Work with communities to limit large and small social gatherings; current transmissions are linked to home gatherings. People must remember that seemingly uninfected family members and friends may be infected but asymptomatic. When meeting people who are not a part of one’s household, masking and physical distancing must be observed at all times, especially when indoors.
- Ensure retail establishment are complying with directives.
- The Abbott BinaxNOW tests perform best when used serially in populations and in schools. Corrections and healthcare workers must use these tests for weekly surveillance testing to monitor and act on county trends identified through sentinel surveillance.
- With over 40% of nursing homes reporting at least one COVID positive staff member, work with nursing homes to trace exposures of positive staff to decrease introduction of community transmission to nursing homes.
- Provide specific mitigation messaging appealing to the following groups to engage them to do their part to slow the spread:
  - Rural communities.
  - Individuals over 65 years-old through senior citizen networks.
  - University students.
- Ensure all hospitals have access to antivirals and antibodies and ensure early use as treatment (within 48 hours). Need visibility from all hospitals on admissions and supplies in order to adequately support them.
- Specific, detailed guidance on community mitigation measures can be found on the [CDC website](#).





# KENTUCKY

STATE REPORT | 10.25.2020

	STATE, LAST WEEK	STATE, % CHANGE FROM PREVIOUS WEEK	FEMA/HHS REGION, LAST WEEK	UNITED STATES, LAST WEEK
<b>NEW COVID-19 CASES</b> (RATE PER 100,000)	8,243 (185)	+17%	90,091 (135)	436,442 (133)
<b>VIRAL (RT-PCR) LAB TEST POSITIVITY RATE</b>	8.5%	-1.0%*	6.9%	5.8%
<b>TOTAL VIRAL (RT-PCR) LAB TESTS (TESTS PER 100,000)</b>	77,509** (1,735**)	+2%**	1,017,322** (1,520**)	6,706,546** (2,043**)
<b>COVID-19 DEATHS</b> (RATE PER 100,000)	96 (2.1)	+66%	1,543 (2.3)	5,484 (1.7)
<b>SNFs WITH ≥1 NEW RESIDENT COVID-19 CASE</b>	21%	+6%*	15%	12%
<b>SNFs WITH ≥1 NEW STAFF COVID-19 CASE</b>	41%	+5%*	29%	24%
<b>SNFs WITH ≥1 NEW RESIDENT COVID-19 DEATH</b>	4%	-1%*	5%	4%

\* Indicates absolute change in percentage points.

\*\* Due to delayed reporting, this figure may underestimate total diagnostic tests and week-on-week changes in diagnostic tests.

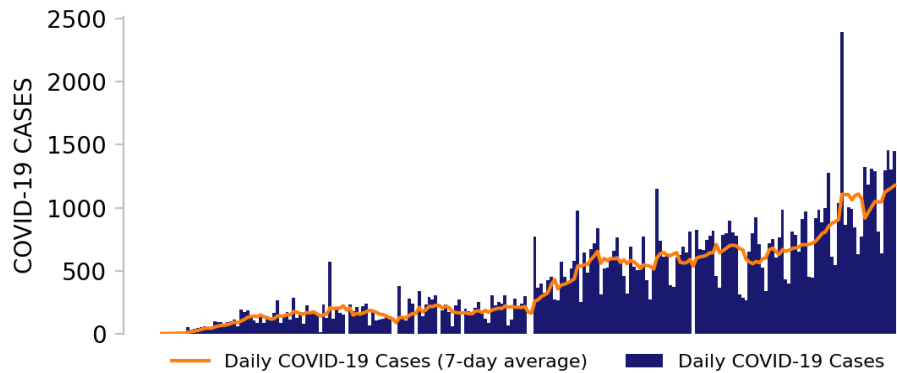
**DATA SOURCES** – Additional data details available under METHODS**Note:** Some dates may have incomplete data due to delays in reporting. Data may be backfilled over time, resulting in week-to-week changes.**Cases and Deaths:** State values are calculated by aggregating county-level data from USAFacts; therefore, the values may not match those reported directly by the state. Data is through 10/23/2020; last week is 10/17 - 10/23, previous week is 10/10 - 10/16.**Testing:** CELR (COVID-19 Electronic Lab Reporting) state health department-reported data through 10/21/2020. Last week is 10/15 - 10/21, previous week is 10/8 - 10/14.**SNFs:** Skilled nursing facilities. National Healthcare Safety Network. Data are reported separately for cases among residents and staff. Last week is 10/12-10/18, previous week is 10/5-10/11. Facilities that are undergoing reporting quality review are not included in the table, but may be included in other NHSN analyses.



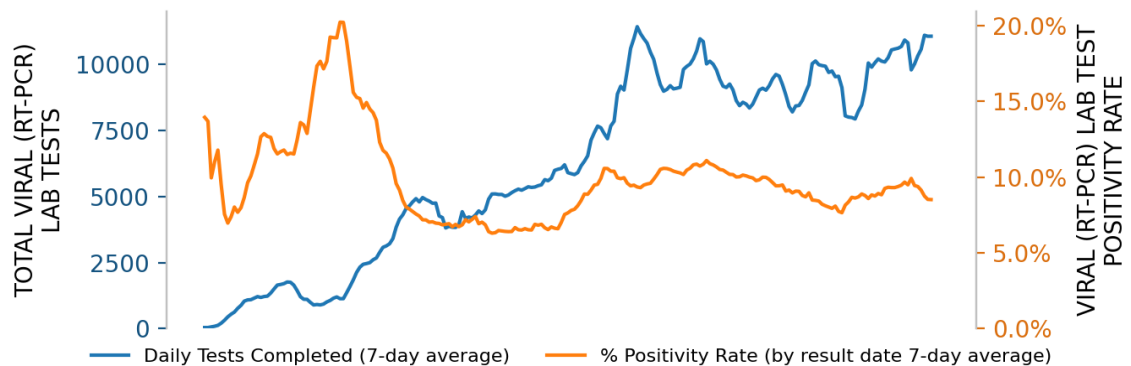
# KENTUCKY

STATE REPORT | 10.25.2020

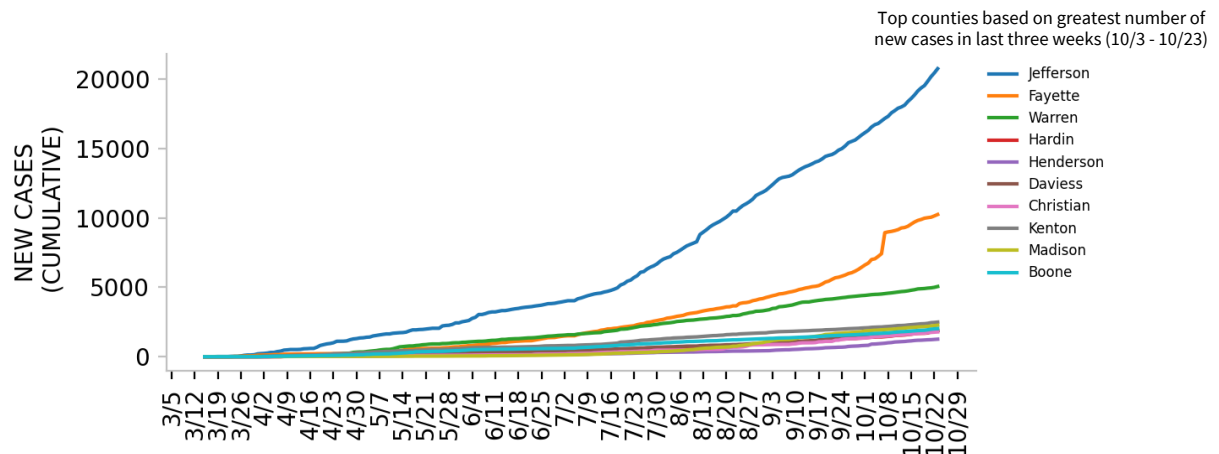
## NEW CASES



## TESTING



## TOP COUNTIES



**DATA SOURCES** – Additional data details available under METHODS

**Note:** Some dates may have incomplete data due to delays in reporting. Data may be backfilled over time, resulting in week-to-week changes.

**Cases:** State values are calculated by aggregating county-level data from USAFacts; therefore, the values may not match those reported directly by the state. Data is through 10/23/2020.

**Testing:** CELR (COVID-19 Electronic Lab Reporting) state health department-reported data through 10/21/2020.

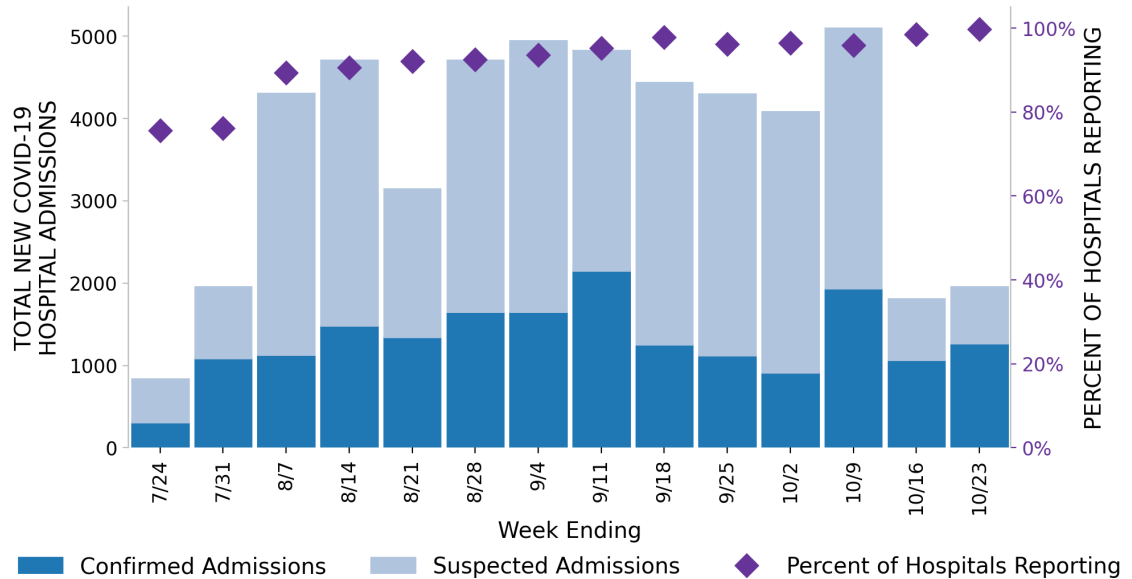


# KENTUCKY

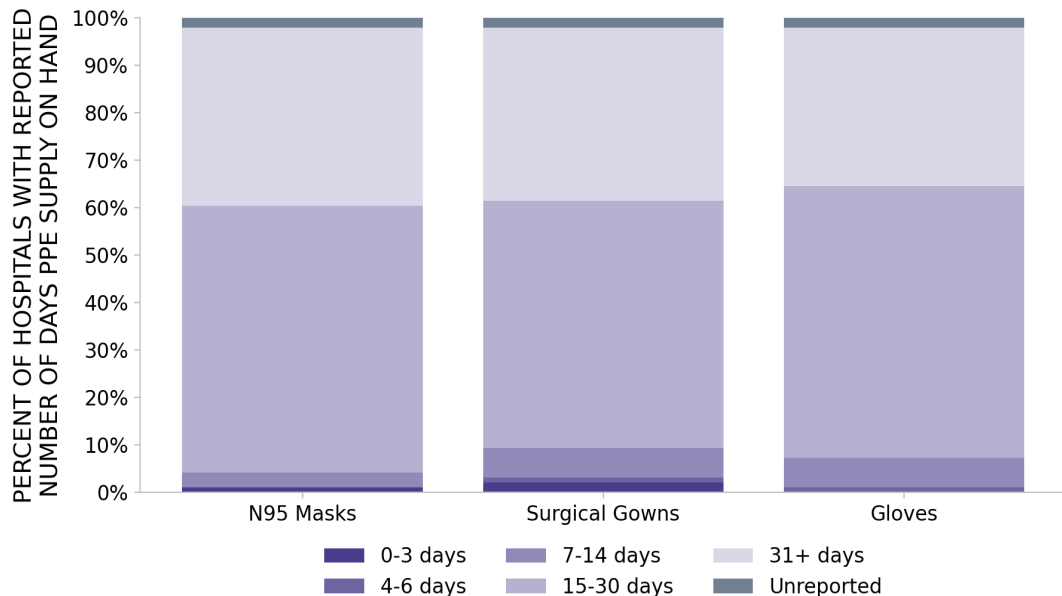
STATE REPORT | 10.25.2020

96 hospitals are expected to report in Kentucky

## HOSPITAL ADMISSIONS



## HOSPITAL PPE SUPPLIES



**DATA SOURCES** – Additional data details available under METHODS

**Hospitalizations:** Unified hospitalization dataset in HHS Protect. These data exclude psychiatric, rehabilitation, and religious non-medical hospitals. In addition, hospitals explicitly identified by states/regions as those from which we should not expect reports were excluded from the percent reporting figure.

**PPE:** Unified hospitalization dataset in HHS Protect. These data exclude psychiatric, rehabilitation, and religious non-medical hospitals. In addition, hospitals explicitly identified by states/regions as those from which we should not expect reports were excluded from the percent reporting figure. Values presented show the latest reports from hospitals in the week ending 10/21/2020.



# KENTUCKY

STATE REPORT | 10.25.2020

## COVID-19 COUNTY AND METRO ALERTS\*

Top 12 shown in table (full lists below)

### METRO AREA (CBSA) LAST WEEK

### COUNTY LAST WEEK

LOCALITIES IN RED ZONE	12 ▲ (+4)	London Elizabethtown-Fort Knox Owensboro Clarksville Evansville Glasgow Bardstown Murray Campbellsville Mount Sterling Central City Middlesborough	47 ▲ (+4)	Hardin Henderson Christian Bullitt Laurel Whitley Nelson Barren Jessamine Shelby Calloway Hart
	3 ▼ (-4)	Louisville/Jefferson County Bowling Green Maysville	22 ▲ (+3)	Jefferson Warren Daviess Boone Scott Knox Adair Floyd Johnson Marshall Ohio Bourbon
	7 ■ (+0)	Lexington-Fayette Cincinnati Richmond-Berea Huntington-Ashland Madisonville Paducah Mayfield	24 ▲ (+2)	Fayette Kenton Madison Hopkins Pike McCracken Campbell Oldham Greenup Rockcastle Clark Letcher
Change from previous week's alerts:           ▲ Increase           ■ Stable           ▼ Decrease				

**All Red Counties:** Hardin, Henderson, Christian, Bullitt, Laurel, Whitley, Nelson, Barren, Jessamine, Shelby, Calloway, Hart, Marion, Logan, Muhlenberg, Perry, Clay, Taylor, Bell, Allen, Union, Meade, Montgomery, Garrard, Wayne, Larue, Knott, Webster, Todd, McLean, Fleming, Lawrence, Lee, Elliott, Nicholas, Fulton, Metcalfe, Jackson, Butler, Henry, Monroe, Leslie, Owsley, Hickman, Cumberland, Bracken, Gallatin

**All Orange Counties:** Jefferson, Warren, Daviess, Boone, Scott, Knox, Adair, Floyd, Johnson, Marshall, Ohio, Bourbon, Martin, Estill, Washington, Rowan, McCreary, Trigg, Magoffin, Breckinridge, Mason, Hancock

**All Yellow Counties:** Fayette, Kenton, Madison, Hopkins, Pike, McCracken, Campbell, Oldham, Greenup, Rockcastle, Clark, Letcher, Harlan, Graves, Clinton, Harrison, Anderson, Spencer, Green, Simpson, Lewis, Casey, Livingston, Lyon

\* Localities with fewer than 10 cases last week have been excluded from these alerts.

**Note:** Lists of red, orange, and yellow localities are sorted by the number of new cases in the last 3 weeks, from highest to lowest. Some dates may have incomplete data due to delays in reporting. Data may be backfilled over time, resulting in week-to-week changes.

**DATA SOURCES** - Additional data details available under METHODS

**Cases and Deaths:** State values are calculated by aggregating county-level data from USAFacts; therefore, the values may not match those reported directly by the state. Data is through 10/23/2020; last week is 10/17 - 10/23, three weeks is 10/3 - 10/23.

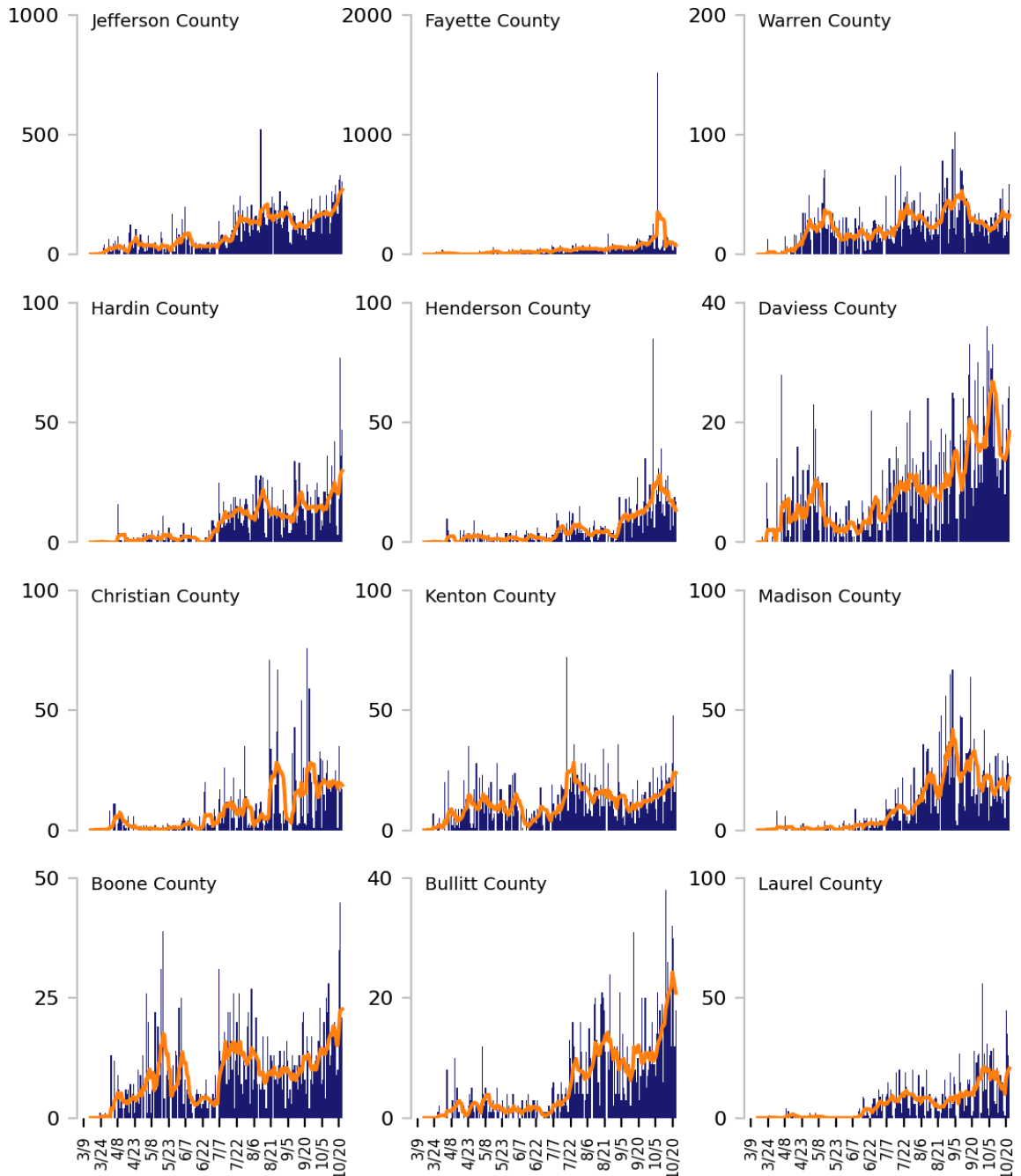
**Testing:** CELR (COVID-19 Electronic Lab Reporting) state health department-reported data through 10/21/2020. Last week is 10/15 - 10/21.



# Top 12 counties based on number of new cases in the last 3 weeks

— Daily COVID-19 Cases (7-day average) — Daily COVID-19 Cases

TOTAL DAILY CASES



**DATA SOURCES** – Additional data details available under METHODS

**Cases:** State values are calculated by aggregating county-level data from USAFacts; therefore, the values may not match those reported directly by the state. Data is through 10/23/2020. Last 3 weeks is 10/3 - 10/23.

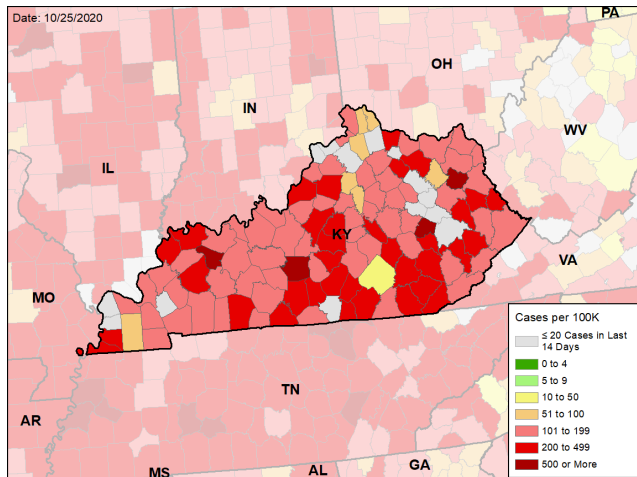


# KENTUCKY

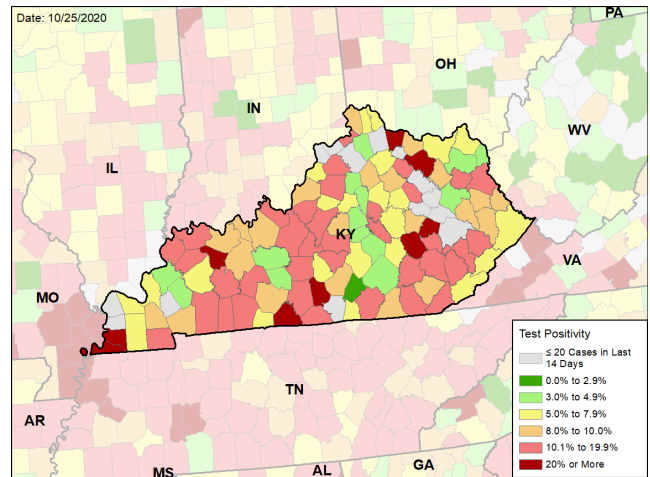
STATE REPORT | 10.25.2020

## CASE RATES AND VIRAL LAB TEST POSITIVITY DURING THE LAST WEEK

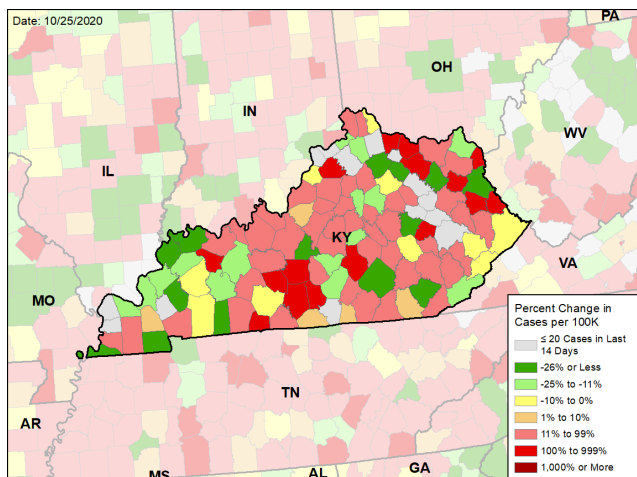
### NEW CASES PER 100,000 DURING THE LAST WEEK



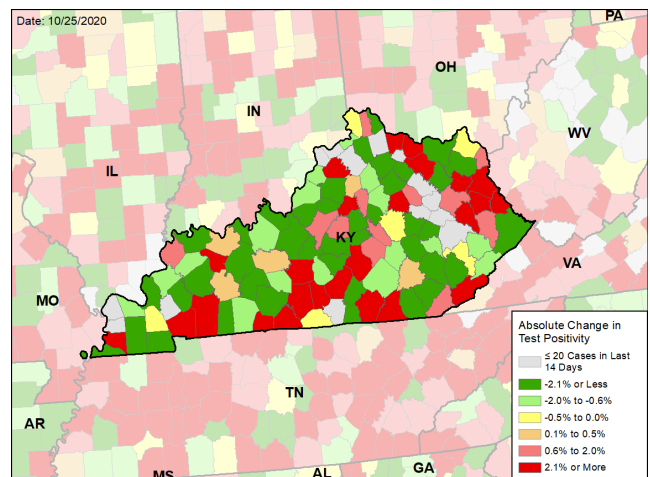
### VIRAL (RT-PCR) LABORATORY TEST POSITIVITY DURING THE LAST WEEK



### WEEKLY CHANGE IN NEW CASES PER 100,000



### WEEKLY CHANGE IN VIRAL (RT-PCR) LABORATORY TEST POSITIVITY



#### DATA SOURCES – Additional data details available under METHODS

**Note:** Some dates may have incomplete data due to delays in reporting. Data may be backfilled over time, resulting in week-to-week changes.

**Cases:** State values are calculated by aggregating county-level data from USAFacts; therefore, the values may not match those reported directly by the state. Data is through 10/23/2020. Last week is 10/17 - 10/23, previous week is 10/10 - 10/16.

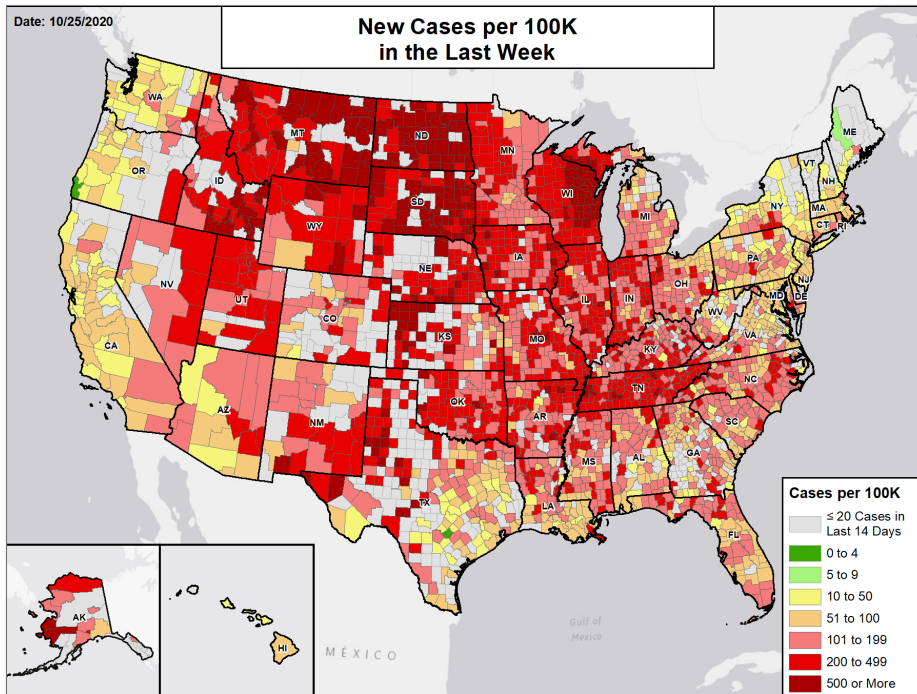
**Testing:** CELR (COVID-19 Electronic Lab Reporting) state health department-reported data through 10/21/2020. Last week is 10/15 - 10/21, previous week is 10/8 - 10/14.





# National Picture

## NEW CASES PER 100,000 LAST WEEK

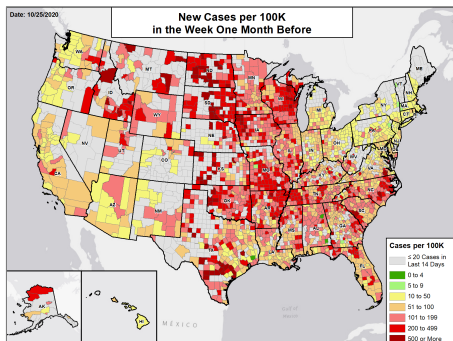


## NATIONAL RANKING OF NEW CASES PER 100,000 LAST WEEK

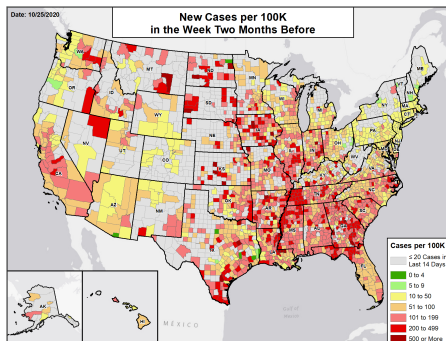
National Rank	State	National Rank	State
1	ND	27	MI
2	SD	28	OH
3	MT	29	SC
4	WI	30	AL
5	ID	31	FL
6	WY	32	WV
7	UT	33	DE
8	NE	34	GA
9	TN	35	LA
10	IA	36	CT
11	RI	37	PA
12	IL	38	AZ
13	AR	39	NJ
14	OK	40	VA
15	AK	41	MA
16	IN	42	MD
17	NM	43	CA
18	MO	44	WA
19	KS	45	OR
20	MN	46	NY
21	KY	47	DC
22	NV	48	NH
23	MS	49	HI
24	CO	50	ME
25	NC	51	VT
26	TX		

## NEW CASES PER 100,000 IN THE WEEK:

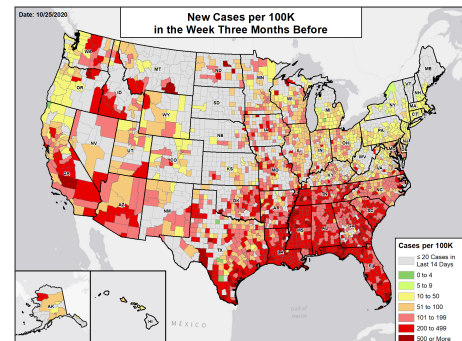
### ONE MONTH BEFORE



### TWO MONTHS BEFORE



### THREE MONTHS BEFORE



## DATA SOURCES

**Note:** Some dates may have incomplete data due to delays in reporting. Data may be backfilled over time, resulting in week-to-week changes.

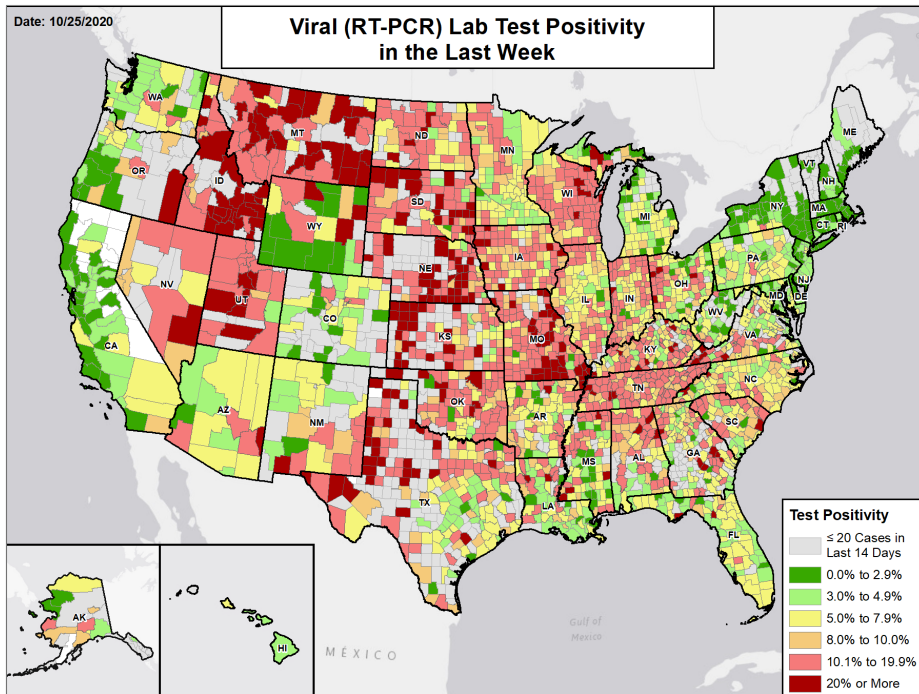
**Cases:** County-level data from USAFacts through 10/23/2020. Last week is 10/17 - 10/23; the week one month before is 9/19 - 9/25; the week two months before is 8/22 - 8/28; the week three months before is 7/25 - 7/31.





# National Picture

## VIRAL (RT-PCR) LAB TEST POSITIVITY LAST WEEK

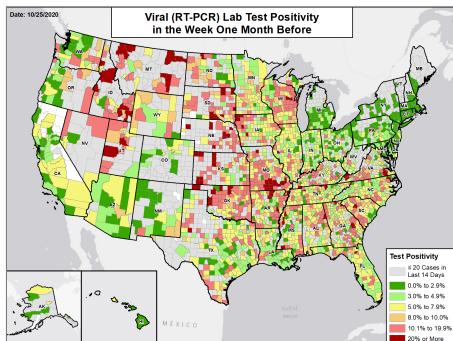


## NATIONAL RANKING OF TEST POSITIVITY LAST WEEK

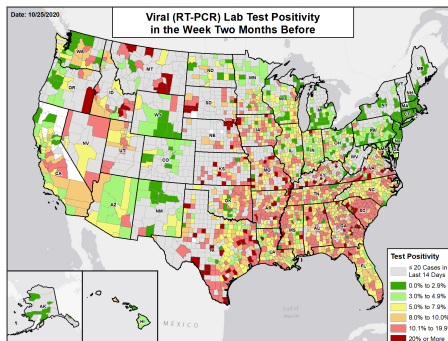
National Rank	State	National Rank	State
1	MT	27	VA
2	ID	28	NC
3	UT	29	GA
4	SD	30	AZ
5	NE	31	CO
6	WI	32	MI
7	ND	33	FL
8	OK	34	PA
9	KS	35	OH
10	MO	36	LA
11	IA	37	HI
12	TN	38	WV
13	NV	39	NJ
14	SC	40	MD
15	IN	41	WA
16	TX	42	CT
17	AL	43	CA
18	KY	44	DE
19	MS	45	RI
20	NM	46	NH
21	WY	47	NY
22	AR	48	MA
23	IL	49	DC
24	OR	50	ME
25	AK	51	VT
26	MN		

## VIRAL (RT-PCR) LAB TEST POSITIVITY IN THE WEEK:

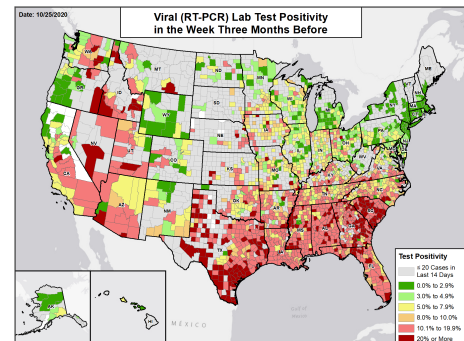
### ONE MONTH BEFORE



### TWO MONTHS BEFORE



### THREE MONTHS BEFORE



## DATA SOURCES

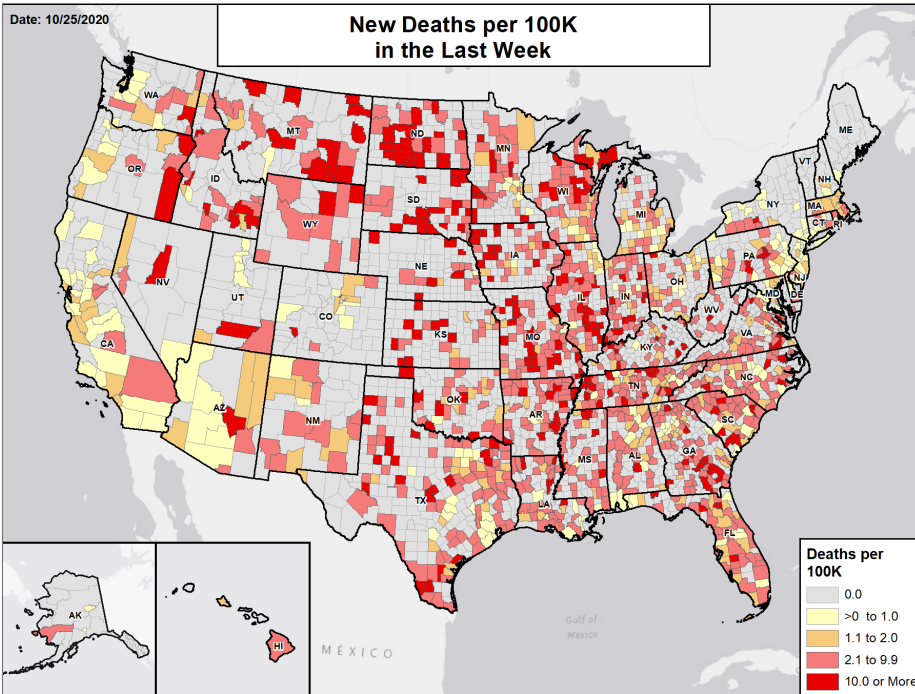
**Note:** Some dates may have incomplete data due to delays in reporting. Data may be backfilled over time, resulting in week-to-week changes.

**Testing:** Combination of CELR (COVID-19 Electronic Lab Reporting) state health department-reported data and HHS Protect laboratory data (provided directly to Federal Government from public health labs, hospital labs, and commercial labs) through 10/21/2020. Last week is 10/15 - 10/21; the week one month before is 9/17 - 9/23; the week two months before is 8/20 - 8/26; the week three months before is 7/23 - 7/29.



# National Picture

## NEW DEATHS PER 100,000 LAST WEEK

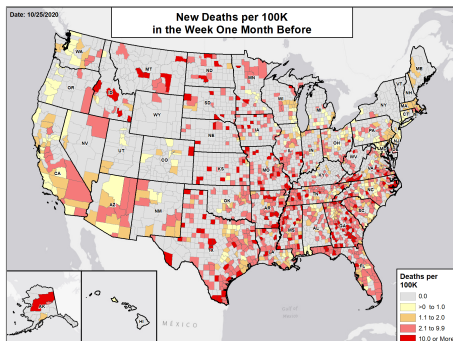


## NATIONAL RANKING OF NEW DEATHS PER 100,000 LAST WEEK

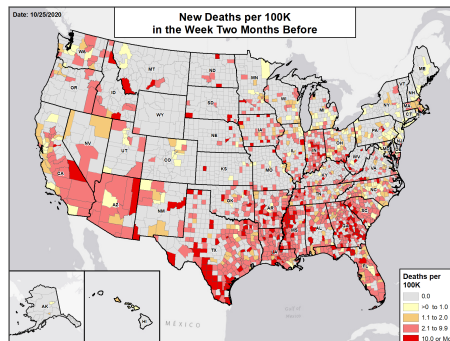
National Rank	State	National Rank	State
1	ND	27	MI
2	SD	28	DE
3	MT	29	TX
4	AR	30	VA
5	KS	31	NM
6	MO	32	AL
7	SC	33	WV
8	IN	34	PA
9	IA	35	OH
10	TN	36	CA
11	WI	37	NV
12	MS	38	CT
13	FL	39	UT
14	RI	40	AZ
15	NE	41	NJ
16	ID	42	WA
17	KY	43	OR
18	GA	44	MD
19	OK	45	CO
20	IL	46	AK
21	NC	47	NY
22	MN	48	NH
23	WY	49	DC
24	LA	50	ME
25	MA	51	VT
26	HI		

## NEW DEATHS PER 100,000 IN THE WEEK:

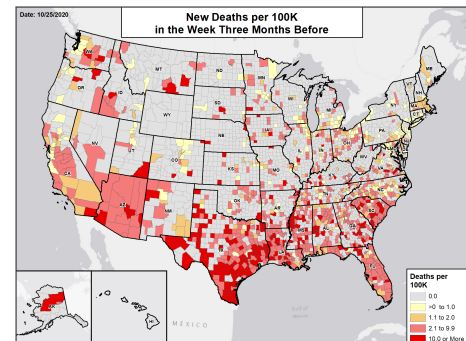
### ONE MONTH BEFORE



### TWO MONTHS BEFORE



### THREE MONTHS BEFORE



## DATA SOURCES

**Note:** Some dates may have incomplete data due to delays in reporting. Data may be backfilled over time, resulting in week-to-week changes.

**Deaths:** County-level data from USAFacts through 10/23/2020. Last week is 10/17 - 10/23; the week one month before is 9/19 - 9/25; the week two months before is 8/22 - 8/28; the week three months before is 7/25 - 7/31.



# METHODS

STATE REPORT | 10.25.2020

**COLOR THRESHOLDS:** Results for each indicator should be taken in context of the findings for related indicators (e.g., changes in case incidence and testing volume). Values are rounded before color classification.

Metric	Dark Green	Light Green	Yellow	Orange	Red
New cases per 100,000 population per week	≤4	5 – 9	10 – 50	51 – 100	≥101
Percent change in new cases per 100,000 population	≤-26%	-25% – -11%	-10% – 0%	1% – 10%	≥11%
Diagnostic test result positivity rate	≤2.9%	3.0% – 4.9%	5.0% – 7.9%	8.0% – 10.0%	≥10.1%
Change in test positivity	≤-2.1%	-2.0% – -0.6%	-0.5% – 0.0%	0.1% – 0.5%	≥0.6%
Total diagnostic tests resulted per 100,000 population per week	≥2001	1001 – 2000	750 – 1000	500 – 749	≤499
Percent change in tests per 100,000 population	≥26%	11% – 25%	1% – 10%	-10% – 0%	≤-11%
COVID-19 deaths per 100,000 population per week	0.0		0.1 – 1.0	1.1 – 2.0	≥2.1
Percent change in deaths per 100,000 population	≤-26%	-25% – -11%	-10% – 0%	1% – 10%	≥11%
Skilled Nursing Facilities with at least one resident COVID-19 case, death	0%		1% – 5%		≥6%
Change in SNFs with at least one resident COVID-19 case, death	≤-2%		-1% – 1%		≥2%

## DATA NOTES

- Some dates may have incomplete data due to delays in reporting. Data may be backfilled over time, resulting in week-to-week changes. It is critical that states provide as up-to-date data as possible.
- Cases and deaths:** County-level data from USAFacts as of 20:58 EDT on 10/25/2020. State values are calculated by aggregating county-level data from USAFacts; therefore, values may not match those reported directly by the state. Data are reviewed on a daily basis against internal and verified external sources and, if needed, adjusted. Last week data are from 10/17 to 10/23; previous week data are from 10/10 to 10/16; the week one month before data are from 9/19 to 9/25.
- Testing:** The data presented represent viral COVID-19 laboratory diagnostic and screening test (reverse transcription polymerase chain reaction, RT-PCR) results—not individual people—and exclude antibody and antigen tests, unless stated otherwise. CELR (COVID-19 Electronic Lab Reporting) state health department-reported data are used to describe county-level viral COVID-19 laboratory test (RT-PCR) result totals when information is available on patients' county of residence or healthcare providers' practice location. HHS Protect laboratory data (provided directly to Federal Government from public health labs, hospital labs, and commercial labs) are used otherwise. Some states did not report on certain days, which may affect the total number of tests resulted and positivity rate values. Because the data are deidentified, total viral (RT-PCR) laboratory tests are the number of tests performed, not the number of individuals tested. Viral (RT-PCR) laboratory test positivity rate is the number of positive tests divided by the number of tests performed and resulted. Resulted tests are assigned to a timeframe based on this hierarchy of test-related dates: 1. test date; 2. result date; 3. specimen received date; 4. specimen collection date. Resulted tests are assigned to a county based on a hierarchy of test-related locations: 1. patient residency; 2. provider facility location; 3. ordering facility location; 4. performing organization location. States may calculate test positivity other using other methods. Last week data are from 10/15 to 10/21; previous week data are from 10/8 to 10/14; the week one month before data are from 9/17 to 9/23. HHS Protect data is recent as of 11:24 EDT on 10/25/2020. Testing data are inclusive of everything received and processed by the CELR system as of 19:00 EDT on 10/24/2020.
- Hospitalizations:** Unified hospitalization dataset in HHS Protect. This figure may differ from state data due to differences in hospital lists and reporting between federal and state systems. These data exclude psychiatric, rehabilitation, and religious non-medical hospitals. In addition, hospitals explicitly identified by states/regions as those from which we should not expect reports were excluded from the percent reporting figure. The data presented represents raw data provided; we are working diligently with state liaisons to improve reporting consistency. Data is recent as of 20:09 EDT on 10/25/2020.
- Hospital PPE:** Unified hospitalization dataset in HHS Protect. This figure may differ from state data due to differences in hospital lists and reporting between federal and state systems. These data exclude psychiatric, rehabilitation, and religious non-medical hospitals. In addition, hospitals explicitly identified by states/regions as those from which we should not expect reports were excluded from the percent reporting figure. Data is recent as of 16:10 EDT on 10/25/2020.
- Skilled Nursing Facilities:** National Healthcare Safety Network (NHSN). Data report resident and staff cases independently. Quality checks are performed on data submitted to the NHSN. Data that fail these quality checks or appear inconsistent with surveillance protocols may be excluded from analyses. Data presented in this report are more recent than data publicly posted by CMS. Last week is 10/12-10/18, previous week is 10/5-10/11. Facilities that are undergoing reporting quality review are not included in the table, but may be included in other NHSN analyses.
- County and Metro Area Color Categorizations**
  - Red Zone:** Those core-based statistical areas (CBSAs) and counties that during the last week reported both new cases at or above 101 per 100,000 population, and a lab test positivity result at or above 10.1%.
  - Orange Zone:** Those CBSAs and counties that during the last week reported both new cases between 51–100 per 100,000 population, and a lab test positivity result between 8.0–10.0%, or one of those two conditions and one condition qualifying as being in the “Red Zone.”
  - Yellow Zone:** Those CBSAs and counties that during the last week reported both new cases between 10–50 per 100,000 population, and a lab test positivity result between 5.0–7.9%, or one of those two conditions and one condition qualifying as being in the “Orange Zone” or “Red Zone.”